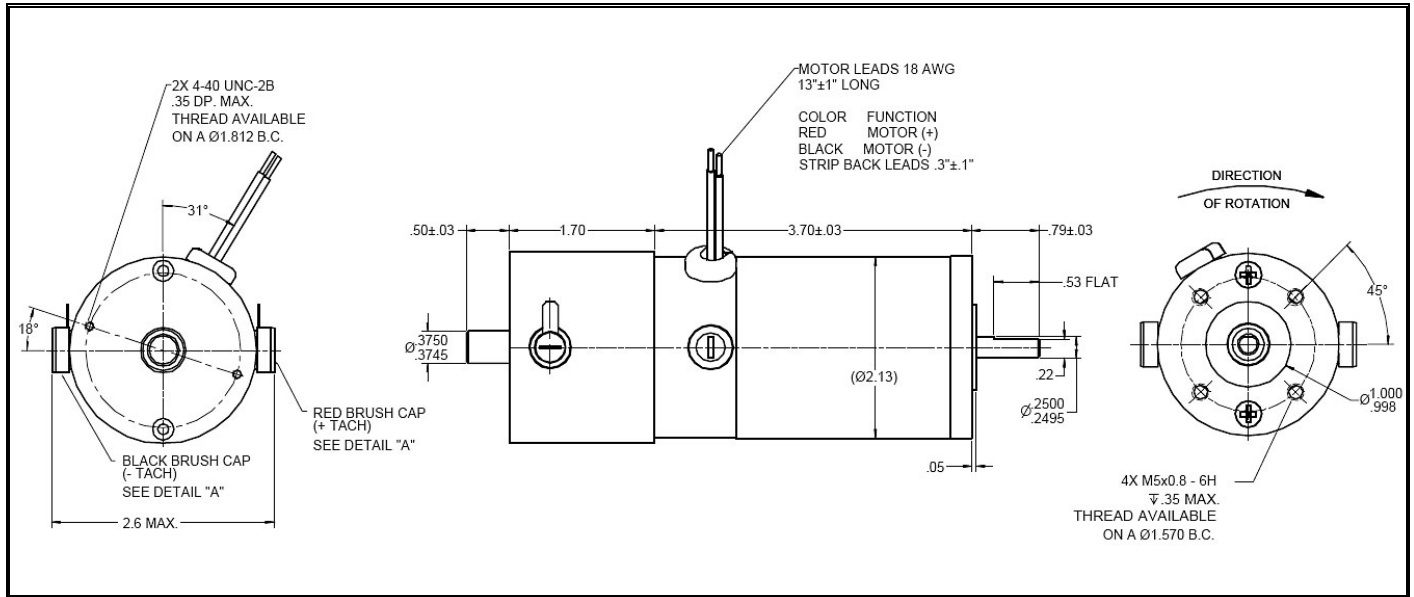


**STANDARD PRODUCT**  
Released 08/13/2009



**MODEL # MMP-D22-376F-24V T-07 ~ Brushed DC Servo Motor / Tachometer**



**STANDARD REAR SHAFT EXTENTION – SEE PAGE TWO FOR STANDARD ENCODER OPTIONS**

DC SERVO MOTOR PERFORMANCE DATA	Value	Units	Tolerance
RATED VOLTAGE D.C.	24.0	VOLTS	----
RATED CURRENT	3.4	AMPERE	----
RATED TORQUE	35.0	OZ - IN	----
RATED SPEED	2600	RPM	+/- 15%
RATED POWER OUT	67	WATTS	+/- 15%
NO LOAD SPEED	3100	RPM	MAX
NO LOAD CURRENT	0.19	AMPS	MAX
BACK EMF CONSTANT (Ke)	7.7	V/KRPM	+/- 10%
TORQUE CONSTANT (Kt)	10.4	OZ-IN / A	+/- 10%
DC ARMATURE RESISTANCE AT 1.5 AMPS	1.9	OHMS	+/- 15%
ARMATURE TEMP	155	DEGR. C	MAX
PEAK TORQUE	140++	OZ - IN	----
OVERALL LENGTH MOTOR + TACHOMETER	5.4	INCH	+/- 0.10
TOTAL WEIGHT	2.6	POUNDS	
<b>ANALOG TACHOMETER CHARACTERISTICS</b>			
TACH VOLTAGE GRADIENT	7.0	V / Krpm	+/- 10%
TACH RIPPLE	3.0	%	Max Pk-Pk

*Note: Totally enclosed, non ventilated design ~ Ball bearings ~ Black finish*

**++ All Peak Torque Values are dependent upon duty. Kindly consult our Sales Offices for further details**

**MIDWEST MOTION PRODUCTS**

**Design, Manufacturing & Distribution — Motion Control Equipment**

10761 Ahern Avenue S. E. Watertown, MN. 55388

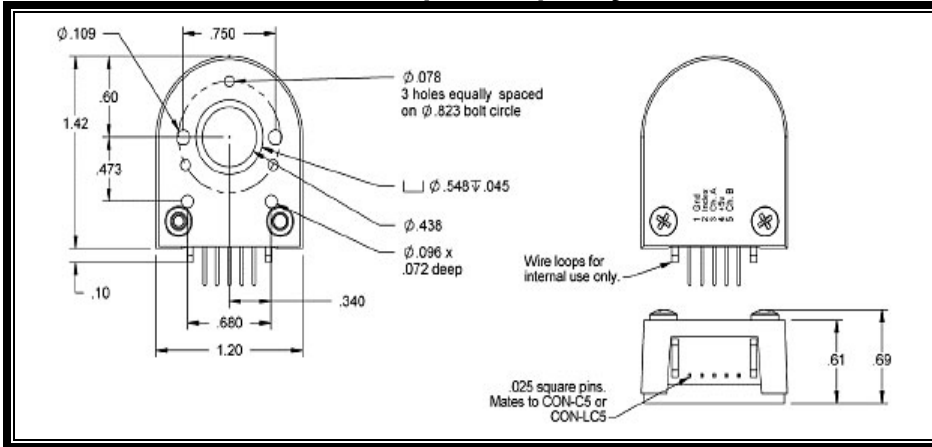
Phone: 952-955-2626 e-Fax: 480-2474096

www.midwestmotion.com

email: randy@midwestmotion.com

**OPTION 1: OPTICAL "KIT" ENCODER** **Consult our Sales Office for Pricing**

For this "Kit" Encoder Option, specify Model # MMP C21-xxxx EU-xxx ETC.



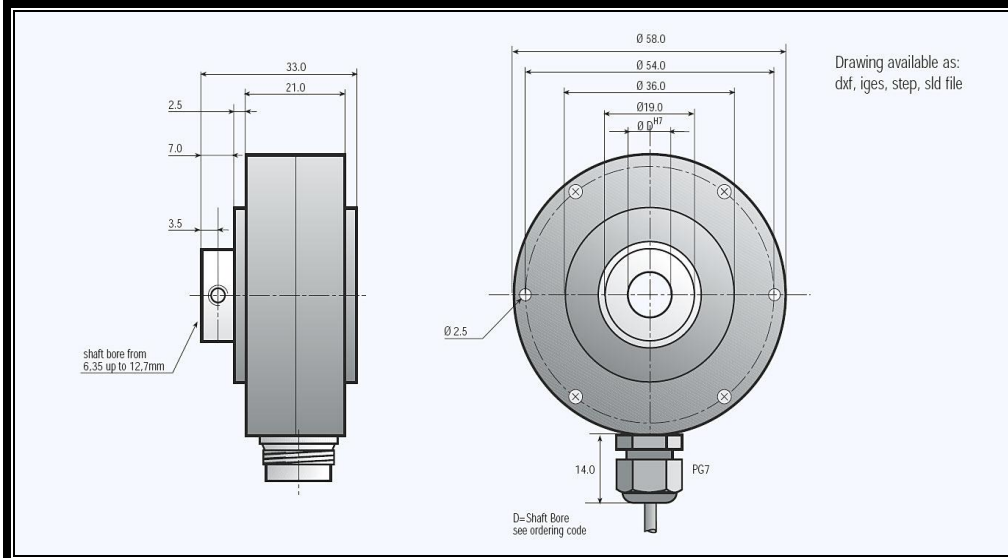
**Interconnects / Functions**

Pin Number	Function	Color
Pin 1	Ground	Brown
Pin 2	Index	Violet
Pin 3	Channel A	Blue
Pin 4	+ 5 Volts	Orange
Pin 5	Channel B	Yellow

**\*\*Encoder Resolutions available: 32 PPR, 100 PPR, 250 PPR, 500 PPR, 1024 PPR**  
**(Use Model # Suffix "EU-xxx" to designate the Encoder and its resolution) PIN ID:**  
 The Standard "Kit" Encoder Option, mounted integrally to the back of the Motor, includes an Index Pulse, and 12" Long Flying Leads with Connector – Mounted and tested before shipping.

**Option 2: "IP-65" Optical Encoder, 1000 PPR STD** **Consult our Sales Office for Pricing**

For this "IP65" Encoder Option, specify Model # MMP C21-xxxx Ei-xxx ETC.  
 Features Index Pulse, Complementary Output Signals, IP-65 Rated protection against harsh environments, 6 FT Long Cable



**Ei-1000**  
**Interconnects/Functions:**

Function:	Wire Color
0 Volts	White
+ Volts	Brown
A	Green
B	Yellow
0	Grey
A-	Pink
B-	Blue
0-	Red

**MIDWEST MOTION PRODUCTS**  
**Design, Manufacturing & Distribution — Motion Control Equipment**

10761 Ahern Avenue S. E. Watertown, MN. 55388  
 Phone: 952-955-2626 e-Fax: 480-2474096

www.midwestmotion.com email: randy@midwestmotion.com



**INTEGRAL BRAKE OPTION**

**Consult our Sales Office for Pricing**

For “Mid Sized” Gearmotors and Motors, including the MMP D22 Series, MMP S22 Series and MMP B58 (Brushless) Series, most are sufficiently served by a 5 In Lb Brake.

Please specify “BR-005” for the Standard “Holding” Brake (not to be used for Dynamic Braking)... This Part Number Suffix also identifies a “Failsafe” type brake – the brake engages in the ABSENCE of input power to the coil.

Please also note if the brake operating voltage is to be a Voltage OTHER THAN the Motor’s specified Operating Voltage. If not otherwise noted, the Brake’s Coil Voltage will match the motor’s operating voltage.

***Dynamic Brakes also available – Contact our Sales Office for Details.***

---

For a “Power ON” brake, or a brake that is engaged with POWER APPLIED, please specify the Part Number Suffix “-005n”. This is added to the end of the Model Number, as follows in this **example:**

Model MMP D22-376F-24V T-07 BR-005n

Both of the aforementioned brakes are integrally mounted to the back of the motor, and are enclosed in an aluminum cover.

The Standard Cover doubles as an Encoder Mounting Surface. Most MMP Brake Motors and Gearmotors are designed to include Encoder Compatibility.

The Standard Brake / Cover Dimensions are as follows:

**2.15” Diameter by 1.55” Long, with 24” Leadwires**  
**Typical Brake Current = 250 mA**

**For additional details and assistance with configuring the model number for Brake and Encoder Options, feel free to contact our Sales Offices.**

**MIDWEST MOTION PRODUCTS**

***Design, Manufacturing & Distribution — Motion Control Equipment***

10761 Ahern Avenue S. E. Watertown, MN. 55388

Phone: 952-955-2626 e-Fax: 480-2474096

[www.midwestmotion.com](http://www.midwestmotion.com)

email: [randy@midwestmotion.com](mailto:randy@midwestmotion.com)